

PT. DUOMAX SOLAR INDONESIA

**Komplek Executive Industri Park Blok F
No 03 - Kota Batam**



PT. DUOMAX SOLAR INDONESIA

Company Introduction:

PT DUOMAX SOLAR INDONESIA (“DUOMAX SOLAR”) is one of the major vendors of SOLAR cells across the globe that has business in R&D, production, and sale of solar cells with leading technology of manufacturing SOLAR cells and capability of producing and supplying.

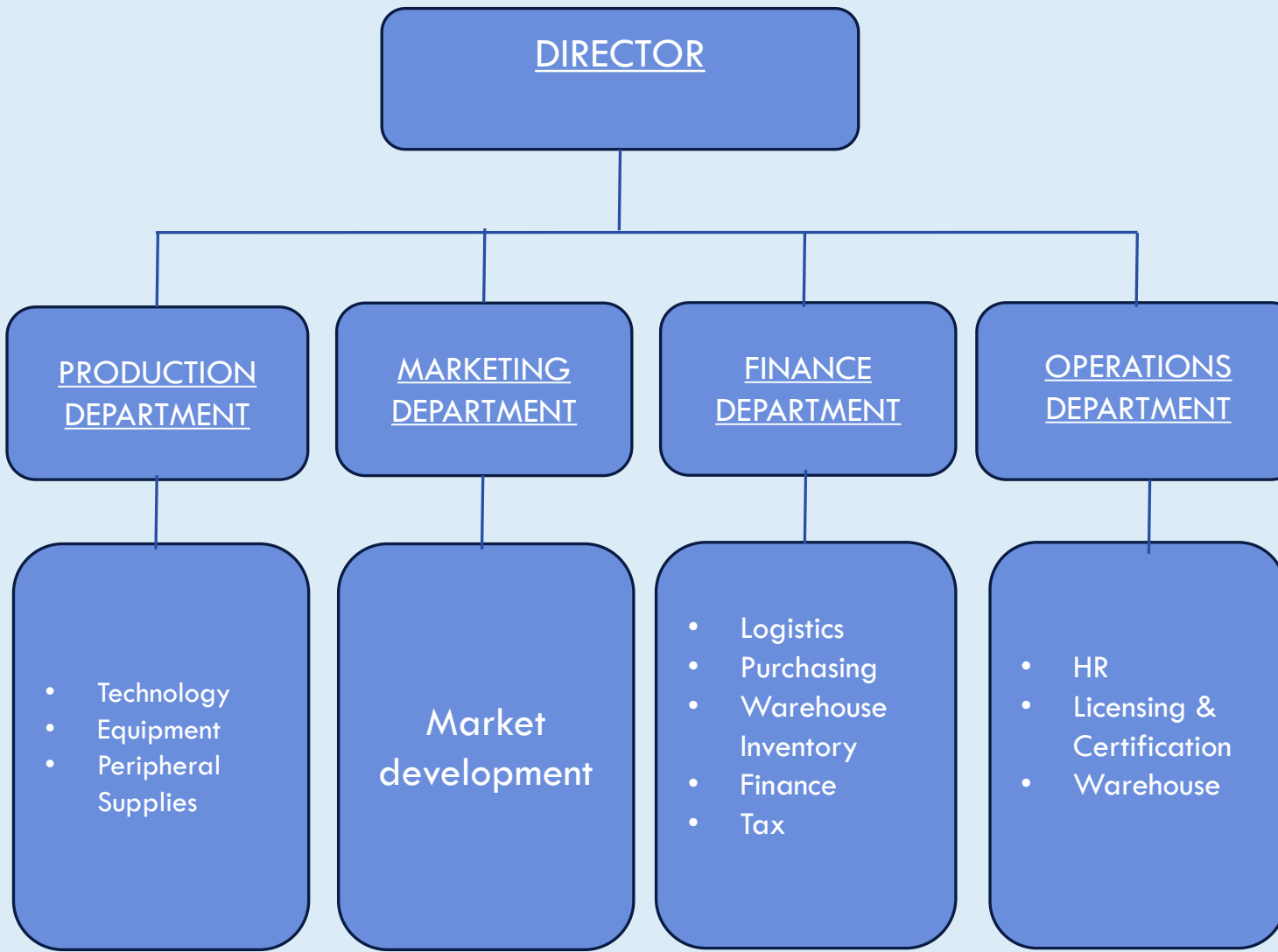
The company locate in Batam Indonesia ,Plant area 19000 m2, Equipped with 2000m2 standard chemical storage warehouse, Year 2023, production capacity of Bifacial Mono PERC Cell has reached 1.2GW, monthly output PERC solar cell 120M pieces and provide more than 300 high technology jobs in BATAM. The company manifests a strong presence in the international market, with products sold in USA,Europe,Turkey,Canada etc, tring to become one of world's top cell exporter and crystalline silicon module producers around the world.

DUOMAX has built-up an international R&D team with members from all over the world, and established a joint R&D Centre and production factory in Batam Indonesia with integrated industrial chain resources from local market. DUOMAX solar is constantly developing new technologies and providing customers with products of higher efficiency, reliability, and power generation.

With the philosophy of creating unique competitiveness for customers and helping them achieve commercial success, DUOMAX Solar has been committed to manufacturing solar cells with sustained innovation and R&D input,and focused on the challenges and pressures of customer concerns.

In DUOMAX Solar,we focus on providing thorough solutions and services for our customers and constantly committed to creating higher value for our customers.

Management Structure



MAINLY PRODUCTS :



182mm 10BB Bifacial Mono PERC Cell

Size: 182 mm × 182 mm ± 0.5 mm (diameter 247 ± 0.5 mm)

Thickness(cell): 160 ± 20 μm

Front Side (-): Silicon oxide + blue silicon nitride compound anti-reflection coating (PID Free); The front side is a half-cut design; The busbar head is a large double fork, and the pads of the busbar are intermittently stepped. The size of the head pad is $1.2 \pm 0.15\text{mm} \times 1.3 \pm 0.15\text{mm}$, and the middle pad of the busbar size is $0.8 \pm 0.15\text{mm} \times 1 \pm 0.15\text{mm}$.

Back Side (+): Passivated layer (AlOx and SiNx) and Rear Contact (Al); the rear electrode is composed of 10 roots rear compound busbar and 160 roots rear Al fingers. The composite busbar is locally narrowed, and the width is $1.5 \pm 0.3\text{mm}$ and $1.0 \pm 0.3\text{mm}$, respectively. 8 sections $1.45 \pm 0.3\text{mm}$ silver anode, no laser pattern under the rear electrode. Silver electrode has round head, and silver electrode is $1.5 \pm 0.6\text{mm}$ hollow at both ends.

COMPANY IDENTITY

Company Name
PT. DUOMAX SOLAR INDONESIA

1

Company Address
Komplek Executive Industrisl Park
Blok F No 03 - Kota Batam

2

Type of Investment
Foreign Direct Investment (FDI)
Keputusan Menteri Hukum dan
Ham Nomor AHU-
0019064.AH.01.01.TAHUN 2023

3

General Overview

Country of Origin
• INDONESIA

4

**Business Sector/KBLI
Indonesian Standard Industrial
Classification**
• 27900
• 27409
• 26120

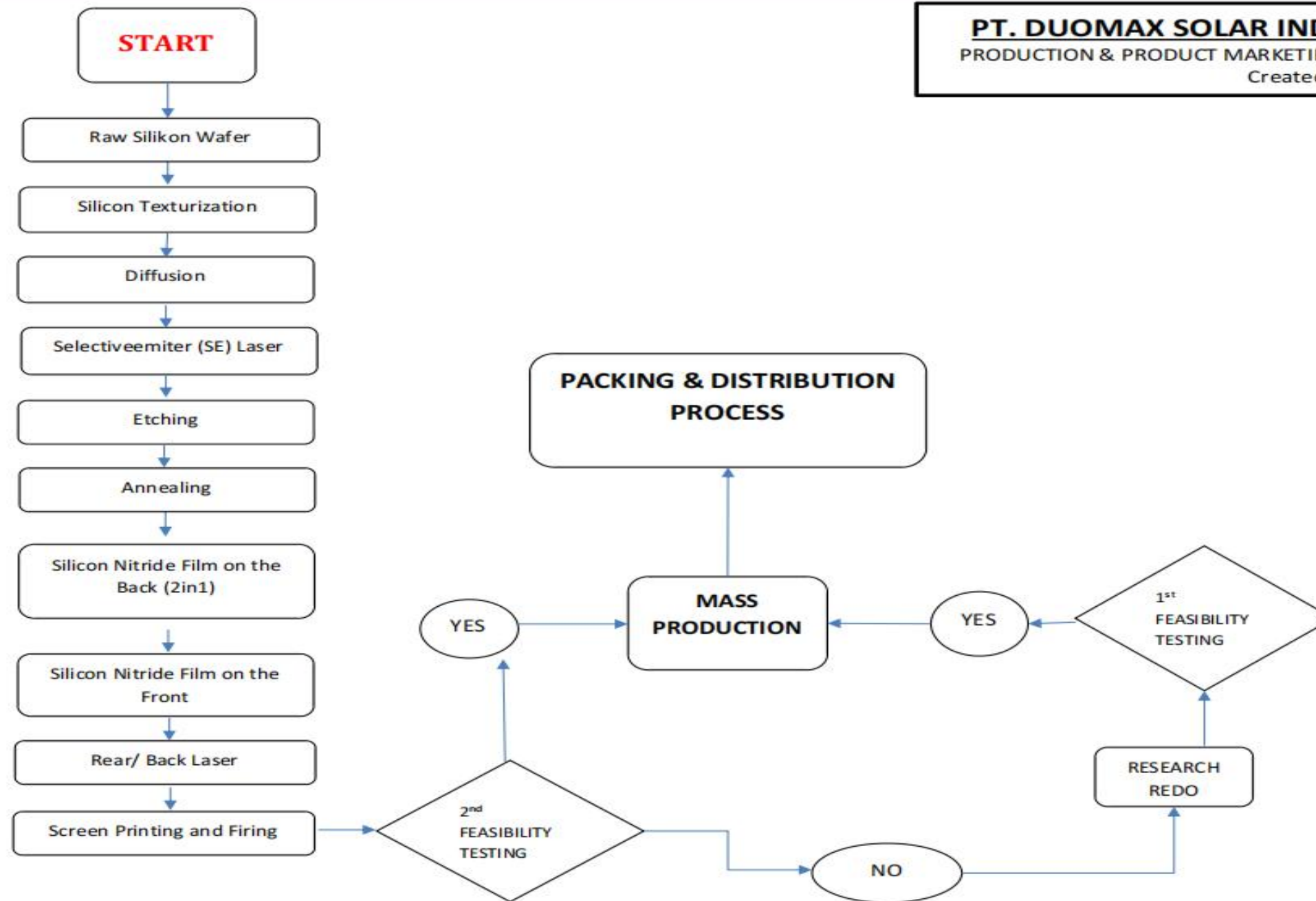
5

Produced Goods
SOLAR CELL

6

Production Capacity
182mm PERC CELL
1.2GW / Year 2023

7



FACILITIES & INFRASTRUCTURE



Activity Location

Located in an Industrial Area

- Coordinate Points :
1.1150040360948656,
104.06124879285993
- Address : Komplek Executive Industrisl
Park Blok F No 03 - Kota Batam
- Village/Subdistrict : Nongsa
- District : Nongsa
- Province: Kepulauan Riau



Area

Land Usage Details

- Land Area : 9,500 m²
- Office Area : 432 m²
- Factory Area : \pm 9,000 m²
- Warehouse : 2,000 m²



Warehouse

Storage Warehouse

- B2 : Komplek Executive Industrisl
Park Blok F No 03 - Kota Batam
- B3 : Komplek Executive Industrisl
Park Blok F No 03 - Kota Batam
- Product : SOLAR CELL



Facilities

Safety and Security

- SOP : SOP exists and varies
for each type of chemical
material
- Emergency Response System:
YES

FACTORY BUILDING



FACTORY BUILDING AREA



B2 STORAGE WAREHOUSE



OFFICE I



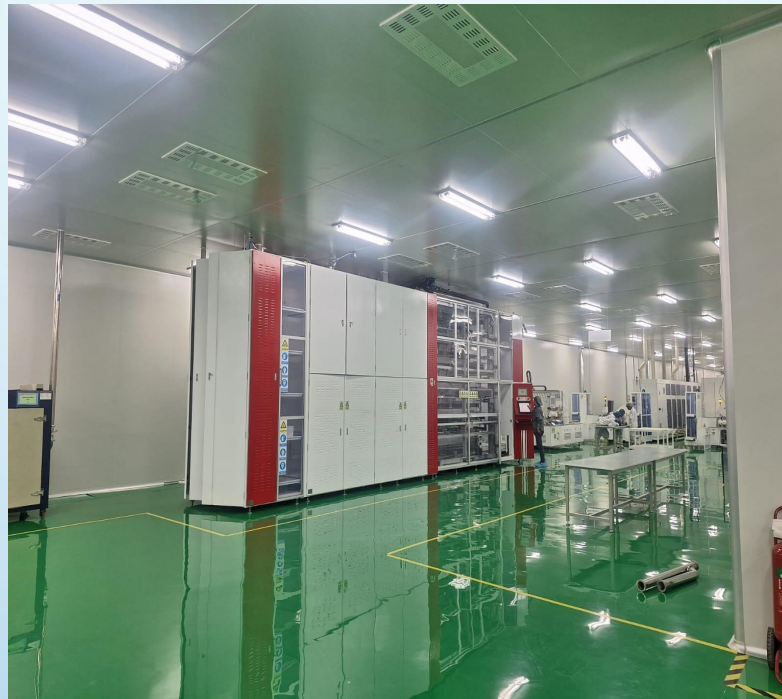
OFFICE II



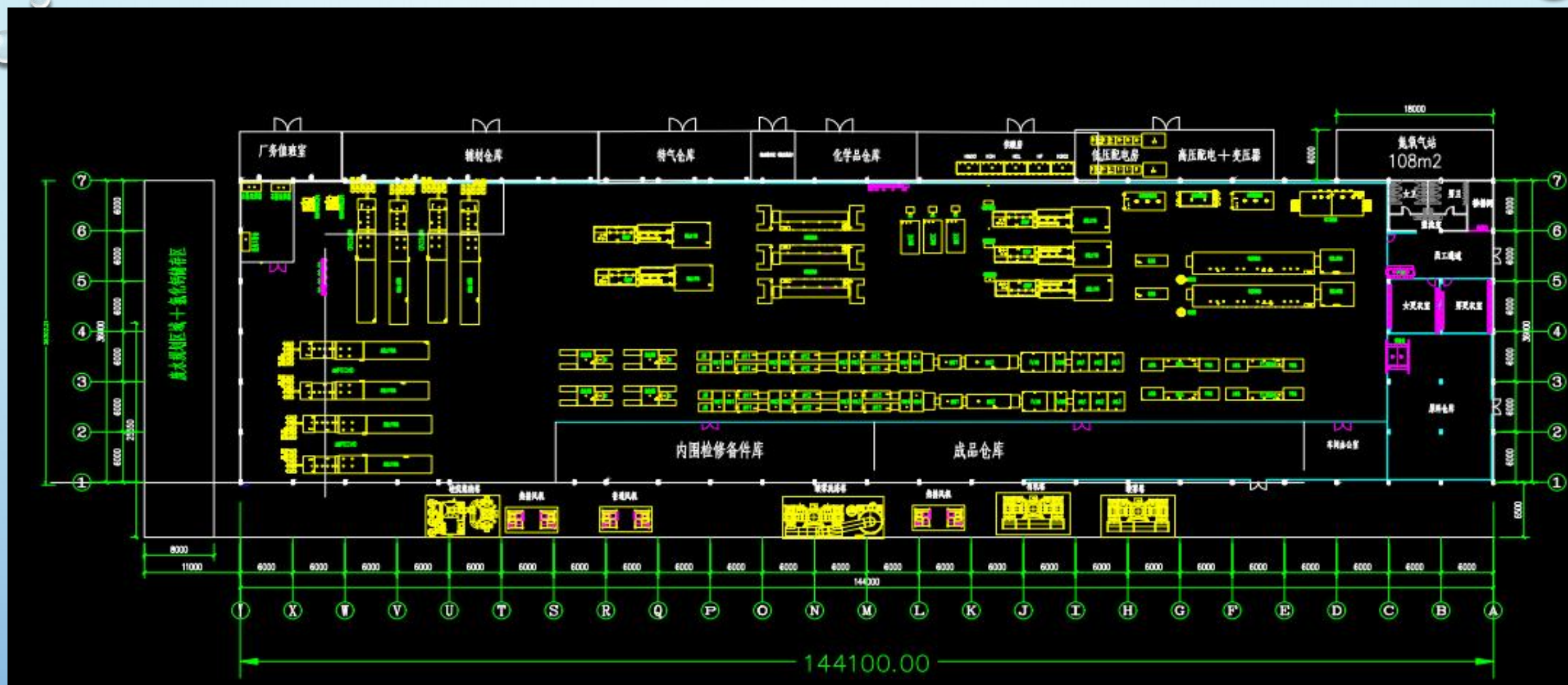
PRODUCTION AREA I



PRODUCTION AREA II



PRODUCTION LAYOUT



EQUIPMENT USED AND WORKFORCE

Main Machine:

1. Solar cell Printer machine with Fast firing furnace and cells sorting system
2. Crystalline Silicon Solar Cell Bulk Defect Passivation Equipment
3. Auto SE Laser Doping Equipment
4. Five-channel Etching And Feeding Machine

5. Auto Laser Slotting Equipment
6. Single crystal trough type automatic velvet feeding machine
7. PECVD Machine
8. Low pressure diffusion furnace
9. Low pressure oxidizing furnace

Equipment

Workforce




Foreign Workforce :
25 People




Indonesia (Local)
Workforce: 250 People

DUOMAX Google Location :

PT.DUOMAX SOLAR INDONESIA




PT.DUOMAX SOLAR INDONESIA


4.0  (5)


Corporate office


Overview


Reviews


 Directions


 Save

 Nearby


 Send to phone


 Copy link


 You visited today


 Komplek Executive Industrial Park, Blok F No 03, Kabil, Kota Batam, Kepulauan Riau


Located in: Executive Industrial Park - KABIL

 34XF+WF Kabil, Batam City, Riau Islands

 Send to your phone

 Your Maps activity

 Add a label

 Suggest an edit

